



# KDE Connect

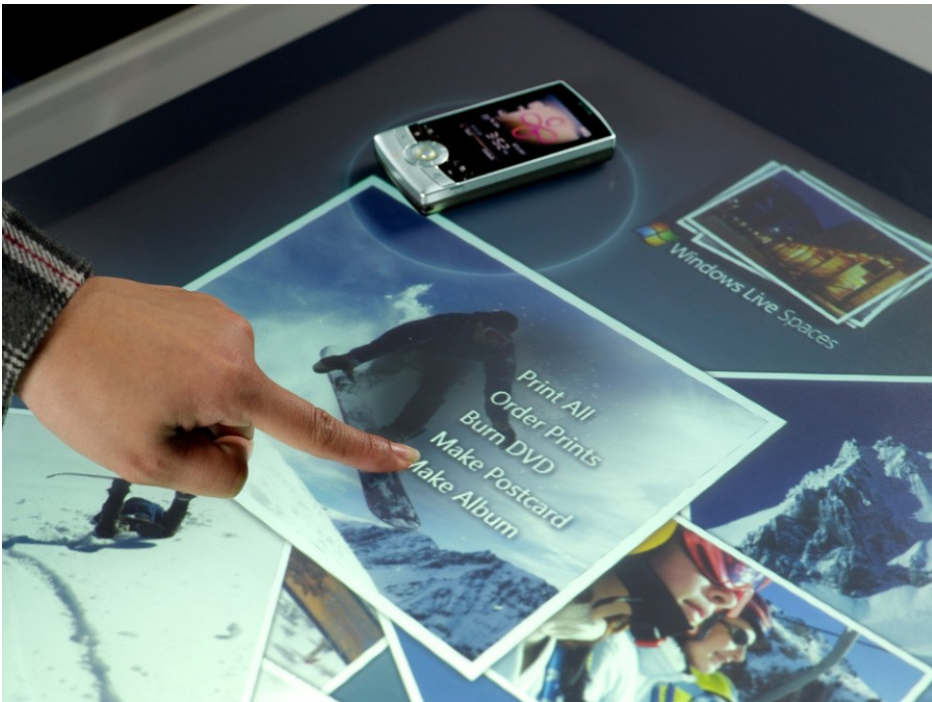
KDE meets your phone

Albert Vaca Cintora - GSOC 2013



# Device connectivity: year 2013

## Expectation



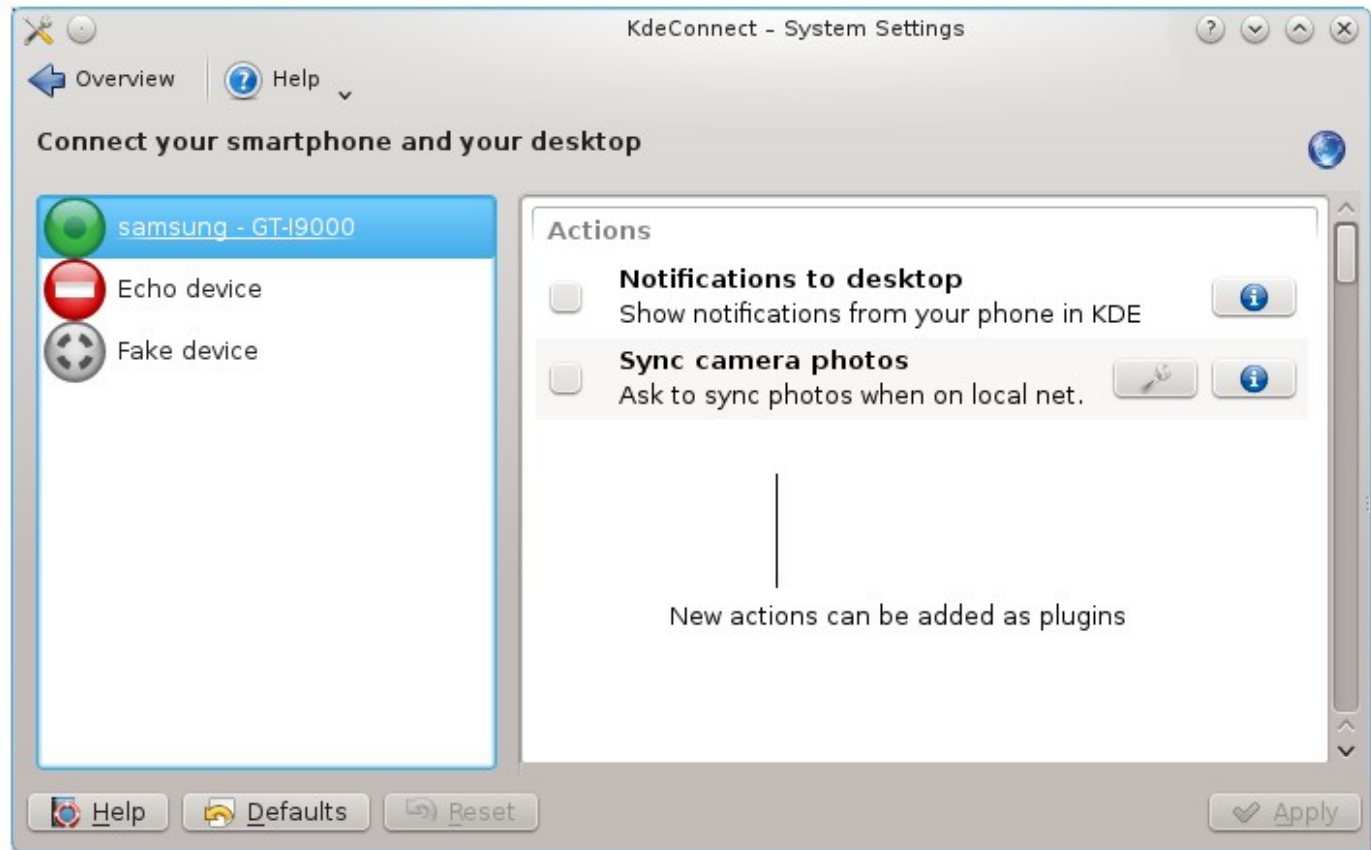
## Reality

- Most people use email to send files between devices
- My mom can't copy holidays pictures from its phone
- Apple is pioneer in device integration

# The KdeConnect solution

Integrate your devices with KDE like you do with web accounts.

Reachable, trusted ———  
Reachable, not trusted —  
Not reachable ———



# What could we do?

- Show notifications in desktop
- Sync camera photos
- Sync clipboard contents
- Smart actions: pause music during a call
- Use our keyboard to write on the phone
- Sync contacts/calendar without an intermediate server
- ...

# How can we implement it?

Plugins, plugins everywhere!

- Backends to reach your phone (local wi-fi, the internet, usb...) are plugins, the best one is used.
- The phone has plugins that emit packages, which have a type (e.g: "org.kde.kdeconnect.phone\_call") and an arbitrary payload.
- When the computer receives a package, it checks if there is plugin to handle that type of package.

# What will we have after this GSOC?

- Wi-fi and internet communication
- Security: Devices must be manually added by the user, through a “pairing” process. In that process they will exchange the public keys that will be used to encrypt any future communication.
- A nice system settings module



Thank you

I'm open to questions

