



KScreen

Daniel Vrátil
<dvratil@redhat.com>

2013/07/14 | Bilbao | Academy 2013

Be Free. KDE



What is KScreen?

- new screen management software
- replacement for KRandR and Kephap
- automagic!



Why?

Having to reconfigure monitors every time you dock or undock your laptop is annoying and takes time.

Users expect this to work out of the box.



How?

KDED module

- a daemon that listens to notifications from X server when a monitor is plugged or unplugged
- remembers configuration ("profile") for every set of connected monitors
- automatically loads the profile when respective monitors are plugged in (or unplugged)



How?

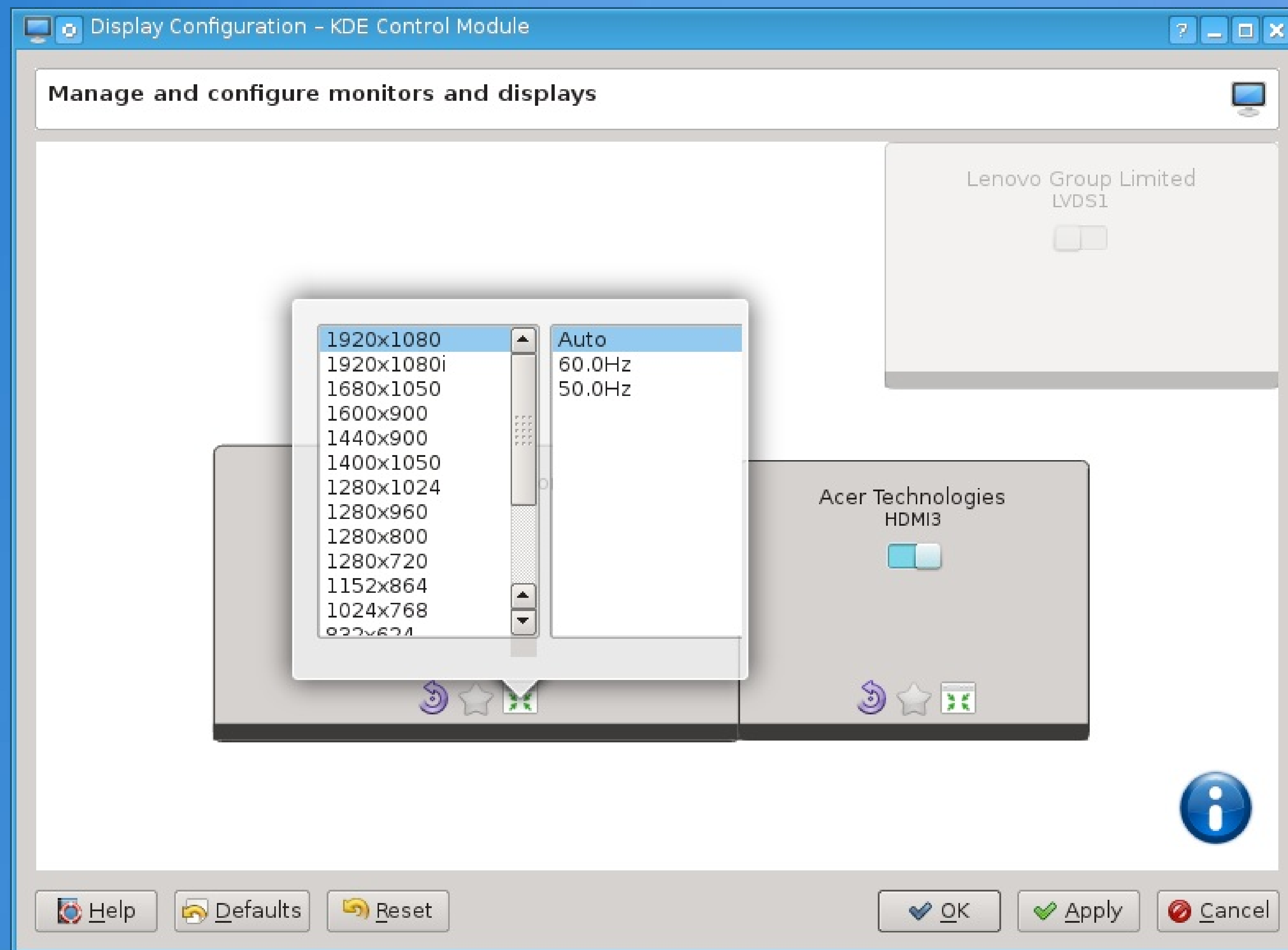
KCM

- allows user to override KDED's default configuration
- configures relative position of screens, rotation, resolution, primary display
- KDED will remember the new configuration
→ users use KCM only rarely



But...

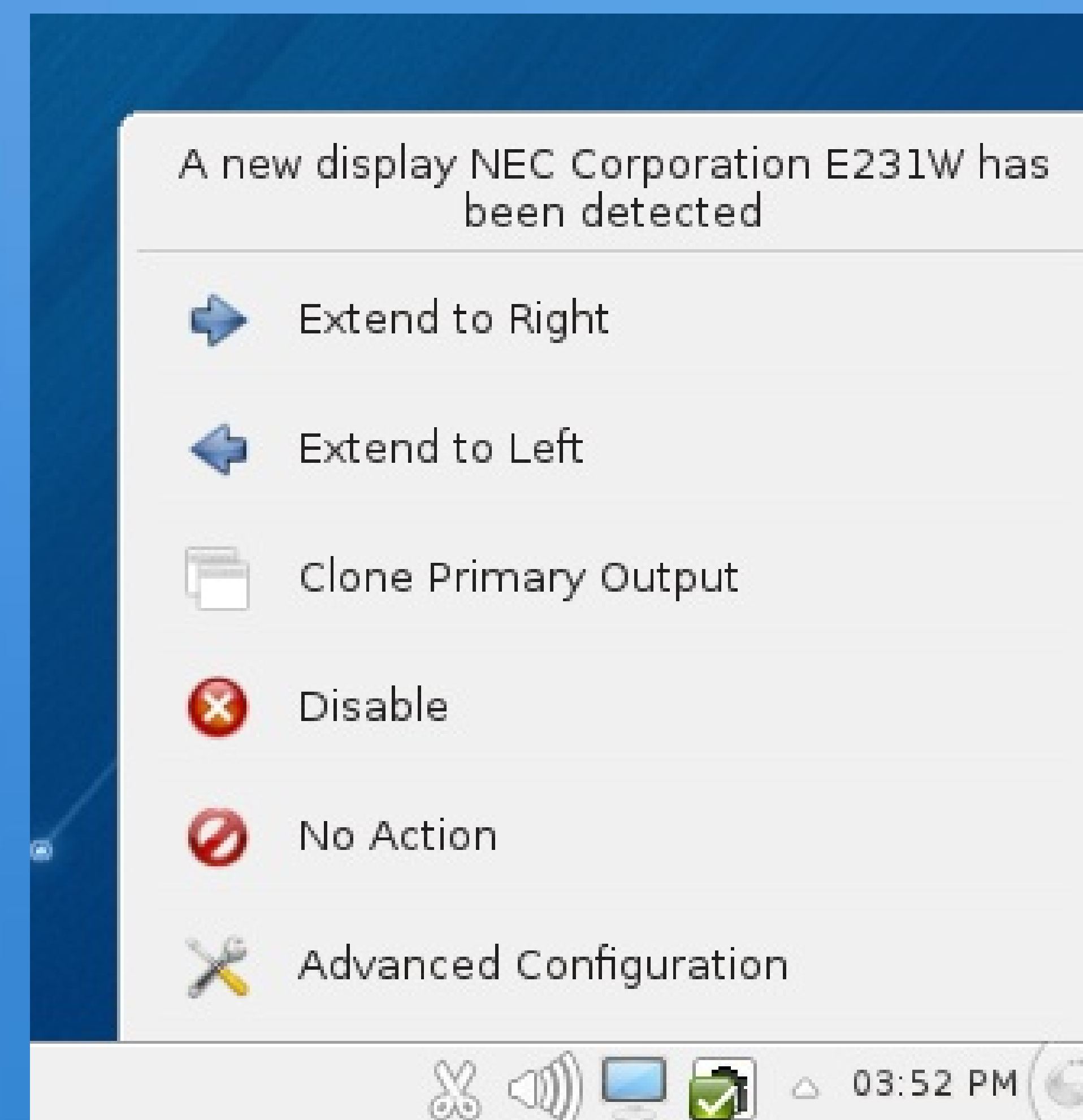
Current UI...sucks



How?

Plasma Applet

- one-click access to KCM at any time
- one-click basic configuration of a newly connected monitor



Future...

- better UI
- custom resolutions
- overscan/panning
- stable API/ABI
- KWin integration (windows placement)
- Activities integration
- Phonon integration





Thank you

Daniel Vrátíl
<dvratil@redhat.com>



Àlex Fiestas
<afiestas@kde.org>



Be Free. KDE

