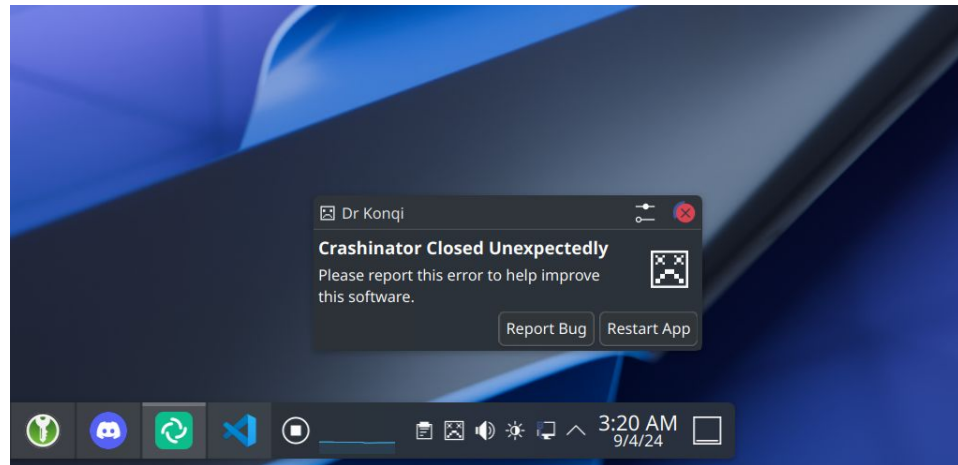


Bright Sides

sitter@kde.org

A dark blue diagonal gradient bar that starts from the bottom left corner and extends towards the top right corner, covering the lower half of the slide.

Some things in life
are bad



They can really
make you mad

```
/usr/bin/../lib64/gcc/x86_64-pc-linux-gnu/14.2.1/..  
/../../include/c++/14.2.1/functional:117:5: note:  
candidate template ignored: substitution failure  
[with _Callable = std::function<void  
(PKResultsStream *)> &, _Args = <>]: no type named  
'type' in 'std::invoke_result<std::function<void  
(PKResultsStream *)> &>'
```

Other things just make you swear and curse

ListView QML Type

Provides a list view of items provided by a model. [More...](#)

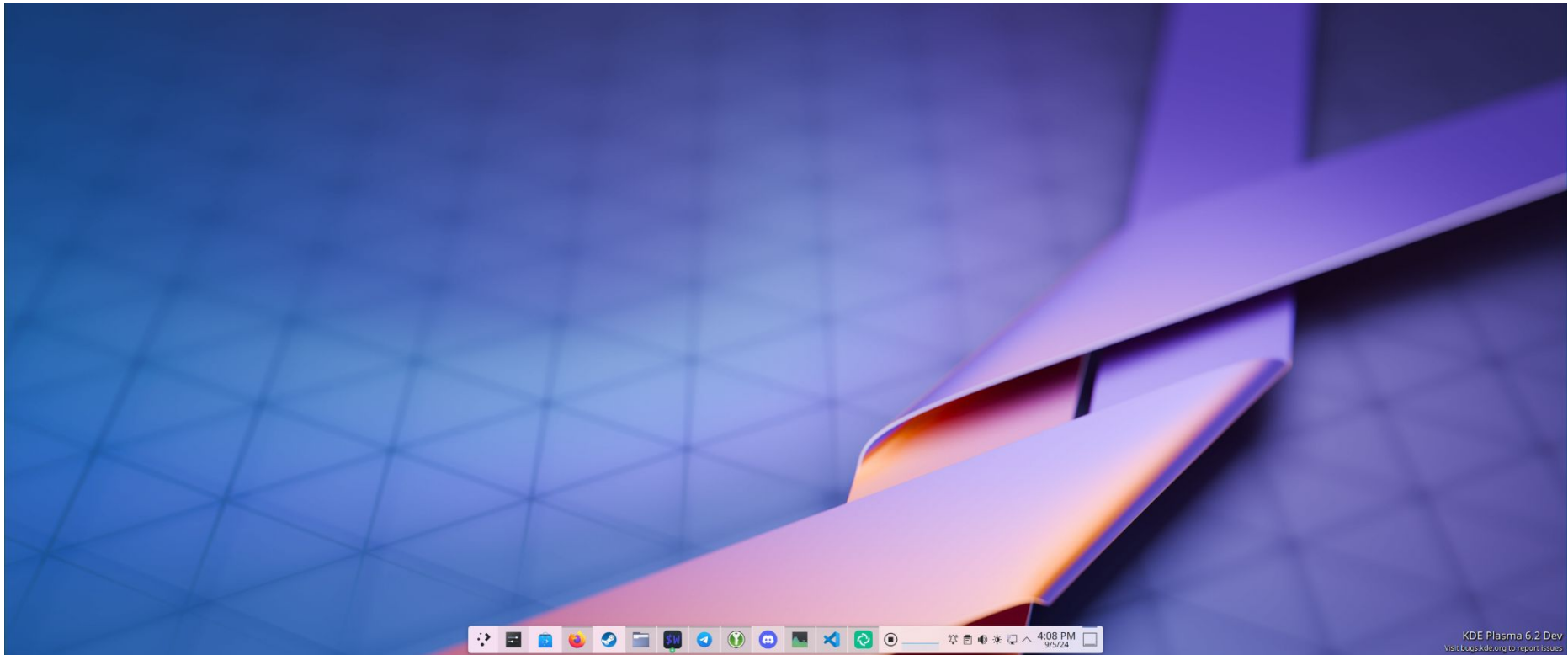
Import Statement:	import QtQuick
Inherits:	Flickable

› [List of all members, including inherited members](#)

Properties

- › [add](#) : Transition
- › [addDisplaced](#) : Transition
- › [cacheBuffer](#) : int

Always look on the bright
side of life



File Edit View Image Layer Select Filter Tools Settings Window Help

Advanced Color Selector



Tool Options

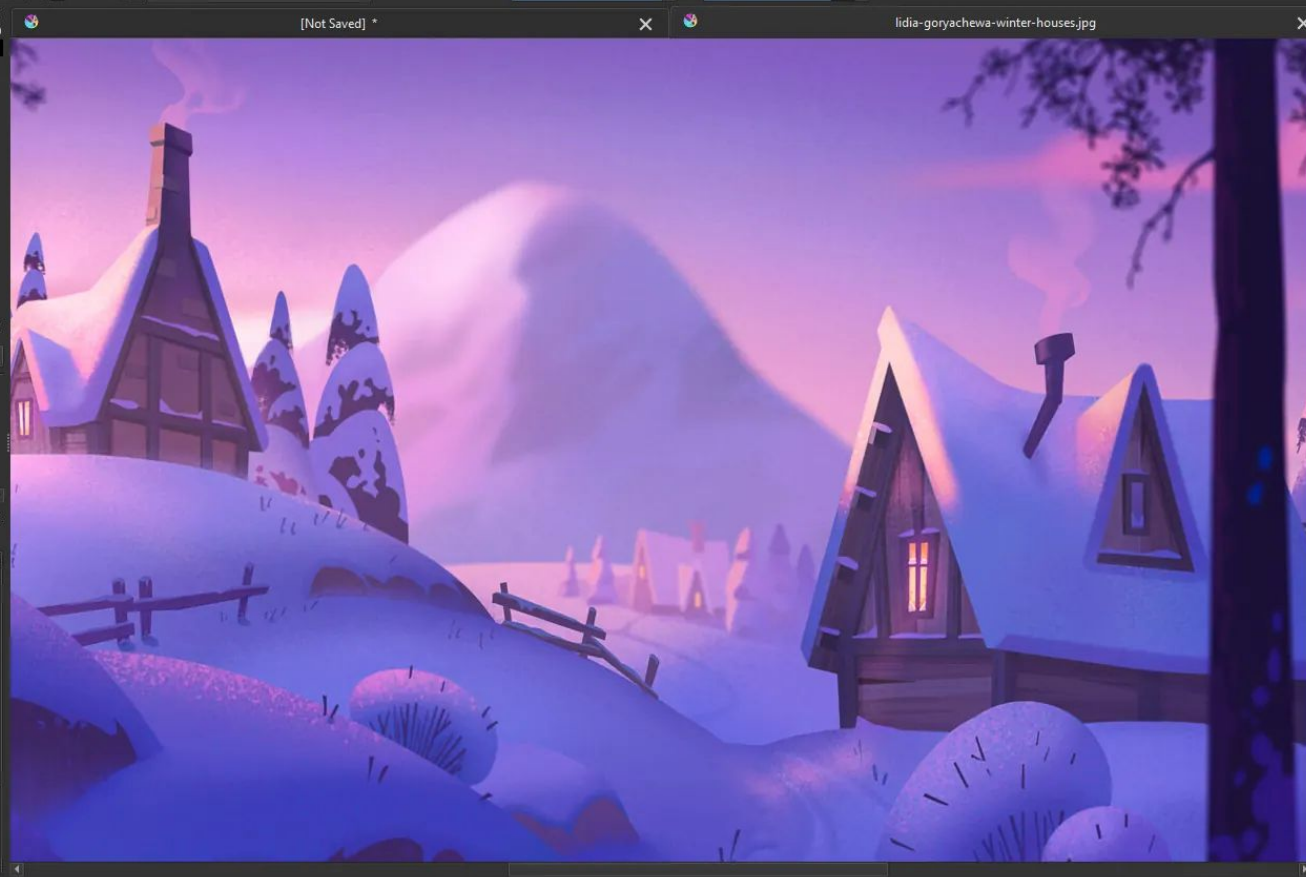
Brush Smoothing: Basic

Snap to Assistants

Quick Settings Docker

Size	Opacity	Flow
0.7 px	1.0 px	1.5 px 2 px
2.5 px	3 px	3.5 px 4 px
5 px	6 px	7 px 8 px
9 px	10 px	12 px 14 px
16 px	20 px	25 px 30 px
35 px	40 px	50 px 60 px

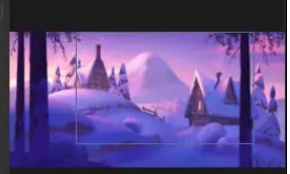
b) Airbrush Soft



RGB/Alpha (8-bit integer/channel) sRGB-elle-V2-srgbtrc.icc

1,920 x 949 (7.0 MiB) 0.00°

Overview



100.0%

0.00°

Layers

Normal

Opacity: 100%

Background

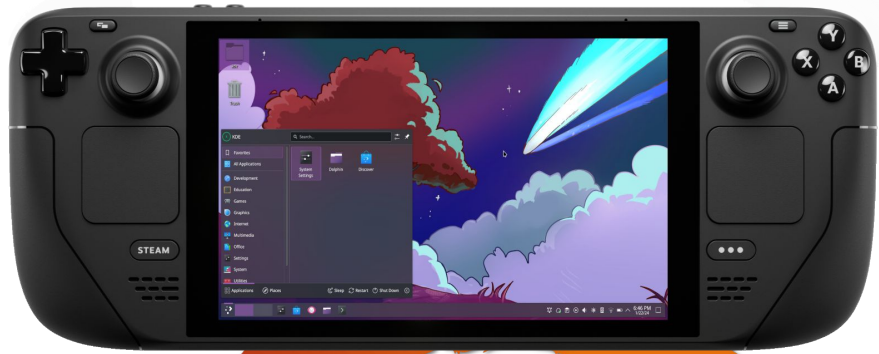
Brush Presets

All Tag

- a) Eraser Circle
- a) Eraser Small
- a) Eraser Soft
- b) Airbrush Soft
- b) Basic-1

Search Filter in Tag

100.0%





- Have a soothing beverage ☕ 🍵 🧋 🥤
- Try again tomorrow 🌅
- Ask for help (or a rubber duck! 🦆 🦆 🦆)
- Consider all the things that **do** work 🎉
- Just declare the problem NP-Hard 😞



Thanks!