

# Report of the Board

Akademy 2025  
KDE e.V. Board  
[kde-ev-board@kde.org](mailto:kde-ev-board@kde.org)



# Board

## Current board:

- Aleix Pol i Gonzàlez - President
- Eike Hein - Treasurer and Vice-President
- Lydia Pintscher - Vice-President
- Adriaan de Groot - Board Member
- Nate Graham - Board Member

## At next AGM (October):

- Election of both Adriaan and Nate's positions

# New Active Members since Akademy 2024

林博仁 (Buo-ren, Lin)	Bart Ribbers	Jack Thomas Hill
		(5 pending)

3 (last year: 7, two years ago: 6)

# Individual Supporting Members and other donors

- 992 paying members (last year: 719)
- 198 supporters on GitHub (last year: 132)
- 507 non-member recurring donors on Donorbox (last year: 79)

# Corporate Supporting Members

## Patrons of KDE:

Blue Systems   Google   SUSE   Qt Group   Canonical  
Slimbook   Tuxedo Computers   Kubuntu Focus   g10 Code  
MBition   Techpaladin

## Supporters of KDE:

basysKom GmbH   Klarälvdalens Datakonsult AB  
enioka Haute Couture   Synergy

# Staff and Contractors

- Assistant to the Board: **Petra Gillert**
- Goals Project Coordinator: **Farid Abdelnour**
- KDE Eco: **Joseph P. De Veagh-Geiss** and **Nicole Teale**
- Marketing Consultants: **Aniqa Khokhar**, **Paul Brown**
- Event Coordinator: **Dina Nouskali**
- Documentation Writer: **Thiago Masato Costa Sueto**
- Plasma Software Engineer: **Kristen McWilliam**
- Software Platform Engineer: **Nicolas Fella**
- Accessibility Engineer: **Ritchie Frodomar**

# Board assistance - Petra

- Maintaining our office
- Accounting and related paperwork
- Reimbursements and financial transfers
- Paperwork related to staff and contractors
- Organizing meetings
- Helping the board stay on top of things

# Event coordination - Dina

- Support for Akademy & Linux App Summit
  - Supporting the organising teams in all organizational matters
  - Working with the promo team on ensuring good promotion
  - Supporting the talks committee to get a good program together
  - Coordinating with sponsors



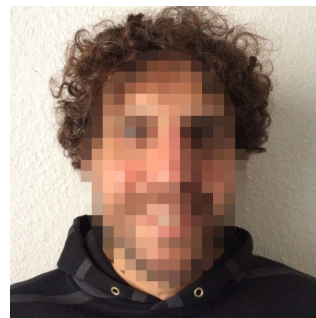
# Goals project coordination - Farid

- Working with the Goal Champions to ensure the KDE Goals move forward
- Outreach around the KDE Goals
- Support for finding grants to support the KDE Goals



# KDE Eco program - Nicole & Joseph

- KDE Eco (<https://eco.kde.org/>)
- Project: Nachhaltige Software Für Nachhaltige Hardware ('Sustainable Software For Sustainable Hardware')
- Focusing on rallying people around hardware sustainability and what we can do to support it
- Driving the successful “End of 10” campaign to help convert Windows 10 exiles to Linux.



# Marketing - Anika and Paul

- Social media presence
- Presence, content, and promotion at external events
- Plasma & Gear release announcements
- KDE e.V. annual report
- Focusing more this year at being “outside the bubble”



# Plasma Software Engineer - Kristen McWilliam

- Started April 2025
- Working to break down barriers for institutions and individuals to use Plasma
- Starting with first-run wizard AKA “out-of-box experience”



# Software Platform - Nicolas

- Focused most of the year on the technical parts of the switch to Qt Documentation (qdoc)
- Been looking into covering more widely known issues that KF are not covering now, like KAccounts.
- Lots of stability and maintenance care.



# Documentation - Thiago

- Ongoing documentation process beginning in 2018
- Joined the payroll November 2022
- Writing and Documentation Coordination
  - Rust tutorial
  - Craft tutorial for Windows
  - QDoc ports
  - How to prepare a C++ app to build on Windows, also Android
  - Turning the Kirigami tutorial into a multilingual tutorial with QML (C++, Python and Rust)
  - Introduction to Python bindings
- New focus every couple of months

# Accessibility - Ritchie

- Started April 2025
- Working on accessibility topics
- Starting with zoom effect and flicker-free keyboard shortcuts

# Akademy

- We are very appreciative of everyone who showed up!
- A big thank you to everyone who helped organize this year's Akademy and making sure we can all get to spend time together geeking out on all things KDE.
- Next year is our 30th birthday! If you'd like to consider hosting a special birthday-bash Akademy next year, please reach out to the Akademy team or board.

[https://akademy.kde.org/news/2025-07\\_akademy-2026-call-for-hosts/](https://akademy.kde.org/news/2025-07_akademy-2026-call-for-hosts/)



# Sprints

- **Plasma Sprint 2025**, TU Graz
- **PIM 2025**, Paris, France
- **KDenlive**

That's not a lot of them. Sprints are on the Community Wiki, <https://community.kde.org/Sprints>

**What would you like to sprint on next?**

# Conferences and trade shows

- Augsburger Linux-Infotag
- Qt Contributor Summit 2024
- FrOScon 2024
- Linux Days Dornbirn 2024
- Matrix Conference 2024
- Nextcloud Community Conference 2024
- KDE's Anniversary 2024
- Ubuntu Summit 2024
- 38c3
- FOSSGIS-Konferenz 2024
- FOSDEM 2025
- OSM Hack Weekend 2025
- FOSSASIA 2025
- Grazer Linuxtage 2025
- Qt World Summit 2025
- UMWELTFESTIVAL 2025
- Linuxtage 2025
- Transitous Hack Weekend 2025
- Display Next Hackfest 2025

# Conferences (our own)

- Academy 2024 & Academy-es 2024
- Linux App Summit 2024 and 2025
- conf.kde.in 2025
- 6th Megarelease parties around the globe



# Fundraising

- Significant increase in funding from EOY fundraiser and the donation notification in Plasma
  - Q4 is increasingly our strongest quarter & essential to our income break-down.
- Patrons: Two new patrons
  - Planning to raise patronship prices starting in 2026
- Grants: NS4NH trucks on in its 2nd year
- First paid app in proprietary app store using new e.V.-funded infrastructure launched

# KDE e.V. reports

<https://ev.kde.org/reports/ev-2024/>



# KDE Goals

How are we doing?

- Streamlined Application Development
- We Care About Your Input
- KDE Needs YOU

# Our KDE highlights of the year

A ton of great things have happened since last Akademy! Here are our personal highlights:

- Even more most successful fundraising campaign in KDE's history
- Increasing number of distros shipping Plasma by default
- Another KDE eco grant: “Sustainable Software For Sustainable Hardware” (German: Nachhaltige Software Für Nachhaltige Hardware)
- Exciting large-scale projects
  - KDE Linux operating system
  - Design system
  - Union
  - Plasma Keyboard

# KDE League

We succeeded in shutting down the inactive KDE League.

After many years of trying to shut it down, we managed to finally finish this endeavour.

Big thanks to everyone involved!

<https://ev.kde.org/2022/02/25/2022-02-25-kde-league/>



# What we said we would do (1/2)

- **Support the new KDE Goals:** The goals have been running successfully with Farid's help.
- **New financial situation:** We saw a great response when it comes to individual donations. Patron price increase isn't effective yet.
- **Coming together:** Akademy and LAS happened successfully. Sprints are still rarer than would be ideal.

## What we said we would do (2/2)

- **Moving beyond Make a Living:** We transformed one of the positions into the Plasma Software Engineer one. We are happy with slow but steady changes. It's a good thing that we can reorient the position when necessary.
- **Polish our hardware partnership story:** Having a good OS story is very important here and it needs addressing before meaningfully establish new relationships.
- **App Stores help fund KDE e.V.:** We continue working with GNOME towards making Flathub a realistic way to fundraise. We haven't been pushing the proprietary stores hard.

# Key topics for next year (1/2)

- **Leverage the KDE Goals:** Are there opportunities that we are missing? The KDE Goals are a good tool for us to channel our resources. Let's make sure we make the most of them before they're done.
- **React to the changing financial landscape:** It looks like we will achieve a balanced budget again ahead of schedule thanks to individual donors. Our other income channels lag this growth, and event sponsorship is collapsing. How do we respond? Does KDE e.V. grow further?
- **Coming together:** Academy & LAS remain important. We still think sprints are a very good tool for great collaboration and team building. Let's do more!
- **30th Anniversary:** In October 1997, KDE was founded. This means that in about a year we'll be 30! 🎂

# Key topics for next year (2/2)

- **Infrastructure:** Has been consistently an area where the KDE e.V. helps KDE shine. We need to make sure it's in great shape.
- **Direct software delivery:** It's increasingly an area where we work. We need to make sure we can deliver our best.
- **Ecosystem & society:** Are we providing the products our society & users need? Are we shipping them in ways they can realistically consume them? Does KDE software comply with the laws where our users live?
  - Special mention to: CRA, accessibility, regulatory changes in France, the UK, etc.

# Talk to us!

[kde-ev-board@kde.org](mailto:kde-ev-board@kde.org)

Here at Akademy:

- in the hallways, or
- in one of the chat rooms, or
- at the Board Q&A BoF on Thursday September 11th, 10:00, room 1